



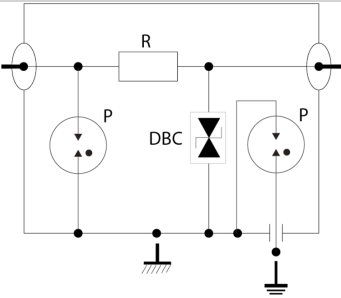
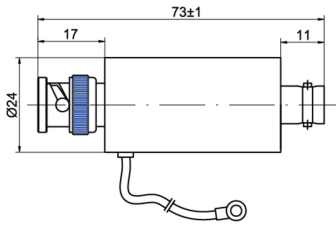
CITEL

Coaxial surge protector for video transmission networks

CXC06-B/MF



- Coaxial surge protector
- Multiples connectors
- Low insertion loss
- Easy installation



Electrical Characteristics	
Network	coaxial DC-70 MHz
Nominal line voltage	Un 6 V
Max. DC operating voltage	Uc 8 Vdc
Max. frequency	f max. DC-70 MHz
Insertion loss	≤0.6 dB
Return loss	≥20 dB
Impedance	50 ohms
VSWR	< 1.5:1
Max. load current @25°C	IL 0.5 A
Max. discharge current max. withstand @ 8/20 µs by pole	Imax 10 kA
Protection level @ In (8/20 µs)	Up L/L 25V / 600V
Impulse current 2 x 10/350µs Test - D1 Category	Iimp 2.5 kA / 10 kA
Nominal discharge current C2 Category	In 5 kA
Max Power	6 W
DC Pass	Yes
Mechanical Characteristics	
Technology	GDT + R + Diode
Connection to Network	Connector BNC Male/Female
Format	Metallic box
Mounting	On cable
Housing material	Brass
Operating temperature	Tu -40/+85°C
Protection rating	IP20
Failsafe mode	Short-circuit - transmission cut-off - fault mode 2
Disconnection indicator	Transmission interrupt
Dimensions	See diagram
Weight	0.064 kg
Standards	
Standards compliance	IEC 61643-21 / EN 61643-21 / UL497E
RohS compliance	Yes
Part number	
630134	

