



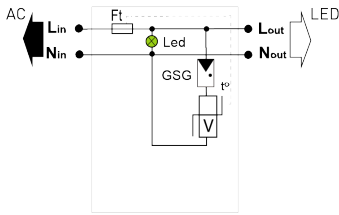
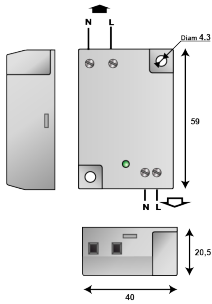
CITEL



Surge protector for LED lighting system Class 2

MLPC-VG2-230L-V

- ▶ Type 2 (or 3) surge protectors for LED
- ▶ Class 2
- ▶ Very compact
- ▶ Plate mounting
- ▶ Screw terminal connection
- ▶ Status indicator
- ▶ Disconnection AC end of life
- ▶ EN 61643-11 compliance



V: Varistor
 GSG: Specific gas tube
 LED: Disconnection indicator
 Ft: Thermal fuse
 t*: Thermal system disconnection

| Electrical Characteristics | | | |
|---|---------------|--|---|
| SPD type | IEC | | 2+3 |
| Network | | | 220-240 V Single-phase |
| AC system | | | TT-TN |
| Max. AC operating voltage | Uc | | 320 Vac |
| Max. load current @25°C | IL | | 10 A |
| Temporary Over Voltage (TOV) Characteristics - 5 sec. Without disconnection | UT | | 335 Vac withstand |
| Temporary Over Voltage (TOV) Characteristics - 120 mn Without disconnection or with safety disconnection | UT | | 440 Vac withstand |
| Residual Current Leakage current to Ground | Ipe | | None |
| Nominal discharge current 15 x 8/20 μs impulses | In | | 5 kA |
| Max. discharge current max. withstand @ 8/20 μs by pole | Imax | | 10 kA |
| Total Maximum discharge current max. total withstand @ 8/20 μs | Imax Total | | 20 kA |
| Withstand on Combination waveform IEC 61643-11 Class III test: 1.2/50μs - 8/20μs | Uoc | | 10 kV |
| Withstand on overvoltages IEEE C62.41.1 | | | 10 kV |
| Protection mode(s) | | | Differential Mode |
| Protection level L/N @ In (8/20μs) | Up L/N | | 1.5 kV |
| Admissible short-circuit current | Iscrr | | 10 000 A |
| Mechanical Characteristics | | | |
| Technology | | | VG Technology (MOV+GSG) |
| Connection to Network | | | By screw terminals: 2.5mm ² max. |
| Mounting | | | On plate |
| Housing material | | | Thermoplastic UL94 V-0 |
| Operating temperature | Tu | | -40/+85°C |
| Protection rating | | | IP20 |
| Failsafe mode | | | Disconnection and AC line cut-off |
| Disconnection indicator | | | LED green OFF and AC network cut-off |
| Operating indicator | | | Green Led ON |
| Dimensions | | | See diagram |
| Disconnectors | | | |
| Thermal disconnector | | | Internal |
| Installation ground fault breaker | | | Type 'S' or delayed |
| Standards | | | |
| Standards compliance | | | EN 61643-11 / IEC 61643-11 |
| Certification | | | KEMA / ENEC05 |
| Part number | | | |
| 837221 | | | |

