



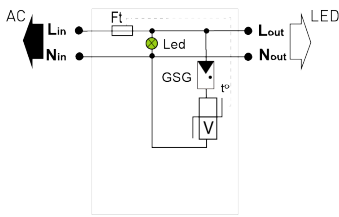
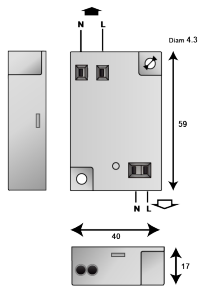
CITEL

Surge protector for LED lighting system Class 2

MLPC-VG2-230L-R



- ▶ Type 2 (or 3) surge protectors for LED
- ▶ Class 2
- ▶ Very compact
- ▶ Plate mounting
- ▶ Spring terminal connection
- ▶ Status indicator
- ▶ Disconnection AC end of life
- ▶ EN 61643-11 compliance



V: Varistor
 GSG: Specific gas tube
 LED: Disconnection indicator
 Ft: Thermal fuse
 t*: Thermal system disconnection

Electrical Characteristics

SPD type	IEC	2+3
Network		220-240 V Single-phase
AC system		TT-TN
Max. AC operating voltage	Uc	320 Vac
Max. load current @25°C	IL	10 A
Temporary Over Voltage (TOV) Characteristics - 5 sec. Without disconnection	UT	335 Vac withstand
Temporary Over Voltage (TOV) Characteristics - 120 mn Without disconnection or with safety disconnection	UT	440 Vac withstand
Residual Current Leakage current to Ground	Ipe	None
Nominal discharge current 15 x 8/20 μs impulses	In	5 kA
Max. discharge current max. withstand @ 8/20 μs by pole	Imax	10 kA
Total Maximum discharge current max. total withstand @ 8/20 μs	Imax Total	20 kA
Withstand on Combination waveform IEC 61643-11 Class III test: 1.2/50μs - 8/20μs	Uoc	10 kV
Withstand on overvoltages IEEE C62.41.1		10 kV
Protection mode(s)		Differential Mode
Protection level L/N @ In (8/20μs)	Up L/N	1.5 kV
Admissible short-circuit current	Iscrr	10 000 A

Mechanical Characteristics

Technology		VG Technology (MOV+GSG)
Connection to Network		By spring - max. cross section 1.5mm ²
Mounting		On plate
Housing material		Thermoplastic UL94 V-0
Operating temperature	Tu	-40/+85°C
Protection rating		IP20
Failsafe mode		Disconnection and AC line cut-off
Disconnection indicator		LED green OFF and AC network cut-off
Operating indicator		Green Led ON
Dimensions		See diagram

Disconnectors

Thermal disconnector		Internal
Installation ground fault breaker		Type 'S' or delayed

Standards

Standards compliance		EN 61643-11 / IEC 61643-11
Certification		KEMA / ENEC05

Part number

837211

